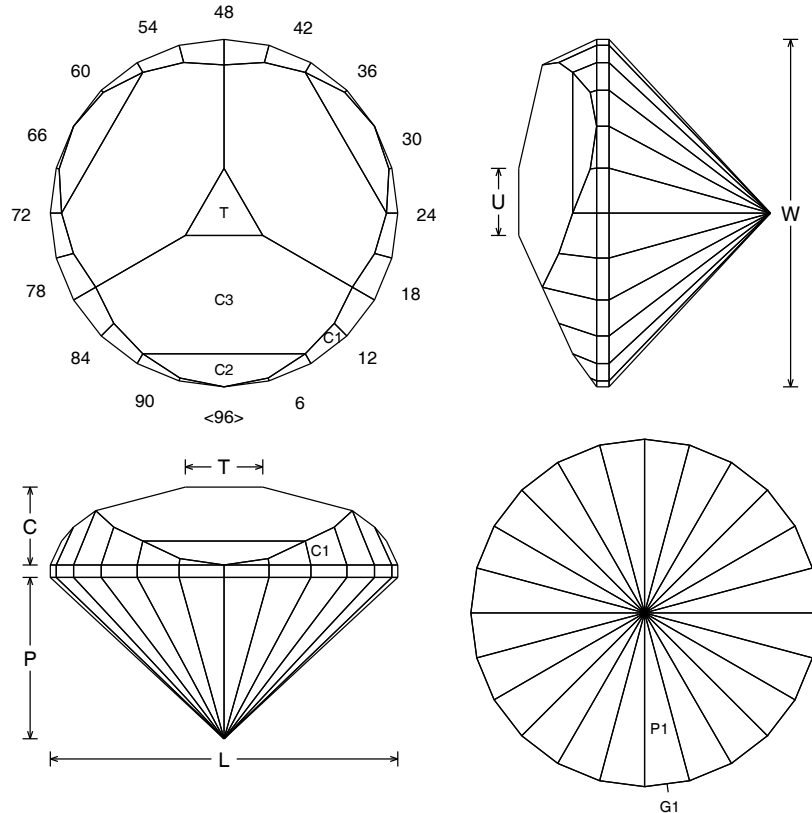


Triplopia

AIB063

Andrew Brown - June 2019

Design Information	
Pavilion facets	24
Girdle facets	24
Crown facets	30+1
Total facets	79
Index gear	96
Symmetry	3-fold mirror image
RI range	1.90 to 2.40
L/W = 1.000	T/W = 0.223
U/W = 0.193	P/W = 0.464
C/W = 0.224	V/W ³ = 0.242



Pavilion

* A = RI 1.90 to 2.40

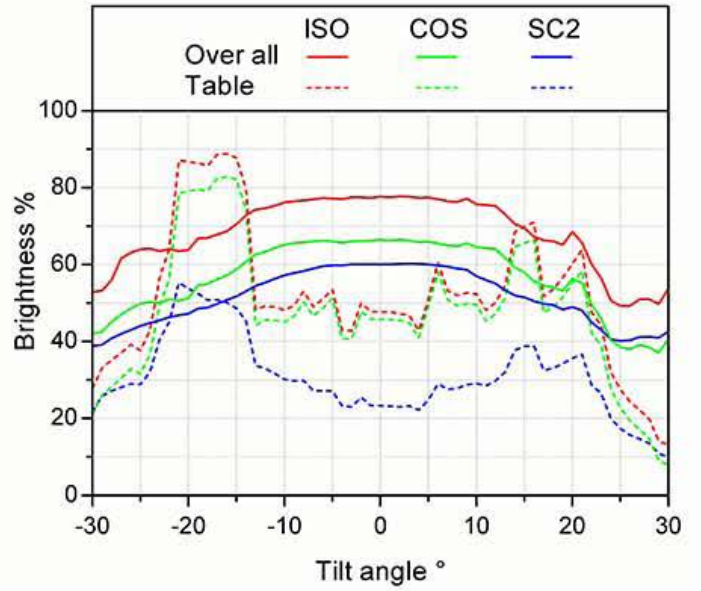
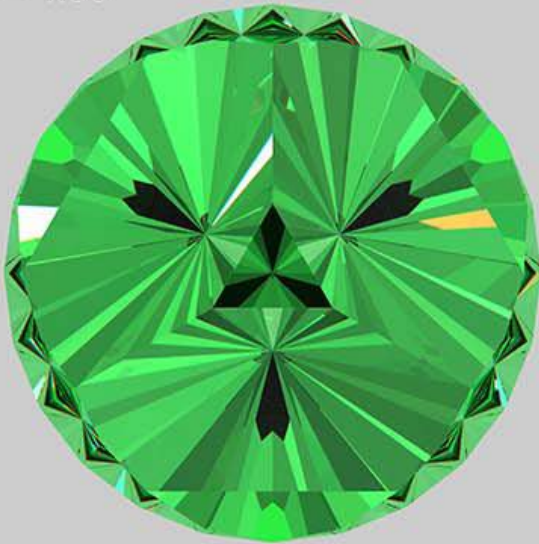
Facets	A	Index	Instructions
P1	43.13°	02-06-10-14-18-22-26-30-34-38-42-46-50-54-58-62-66-70-74-78-82-86-90-94	Form FCP
G1	90.00°	02-06-10-14-18-22-26-30-34-38-42-46-50-54-58-62-66-70-74-78-82-86-90-94	Set stone size

Crown

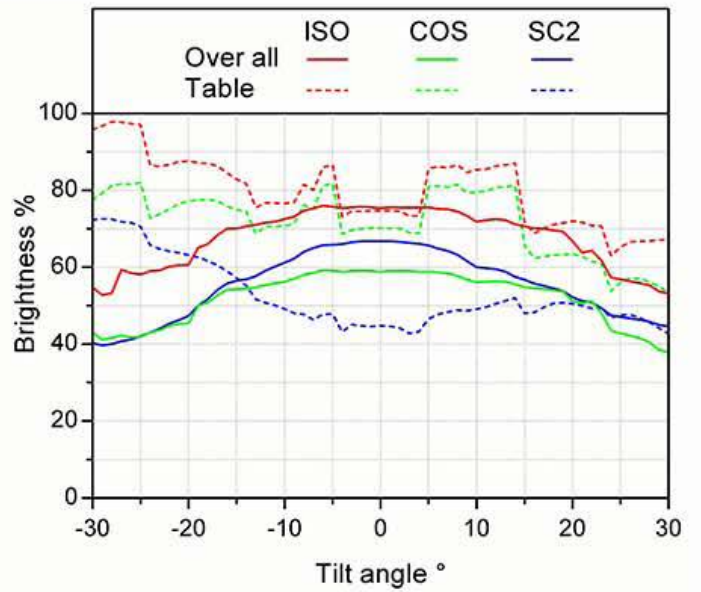
Facets	A	Index	Instructions
C1	65.00°	02-06-10-14-18-22-26-30-34-38-42-46-50-54-58-62-66-70-74-78-82-86-90-94	Establish girdle width
C2	35.95°	96-32-64	Meet G1, C1
C3	24.50°	96-32-64	Meet C1, C2
T	0.00°	Table	Float in table to approximately 22% of width

Visit www.facetingdesigns.com for more

RI = 1.90



RI = 2.16



RI = 2.30

